

## Certificate of Analysis



ES-RCoA-0954

Hemp Northern lights THCA

<b>Client name:</b>	E&S Organic Products s.r.o.	<b>Date of Analysis:</b>	04.12.2024
<b>Batch number:</b>	E&S 2_121654	<b>Raw data:</b>	RsID: 148423
<b>Date of manufacture:</b>		<b>Analytical technique:</b>	UPLC – PDA (UV)

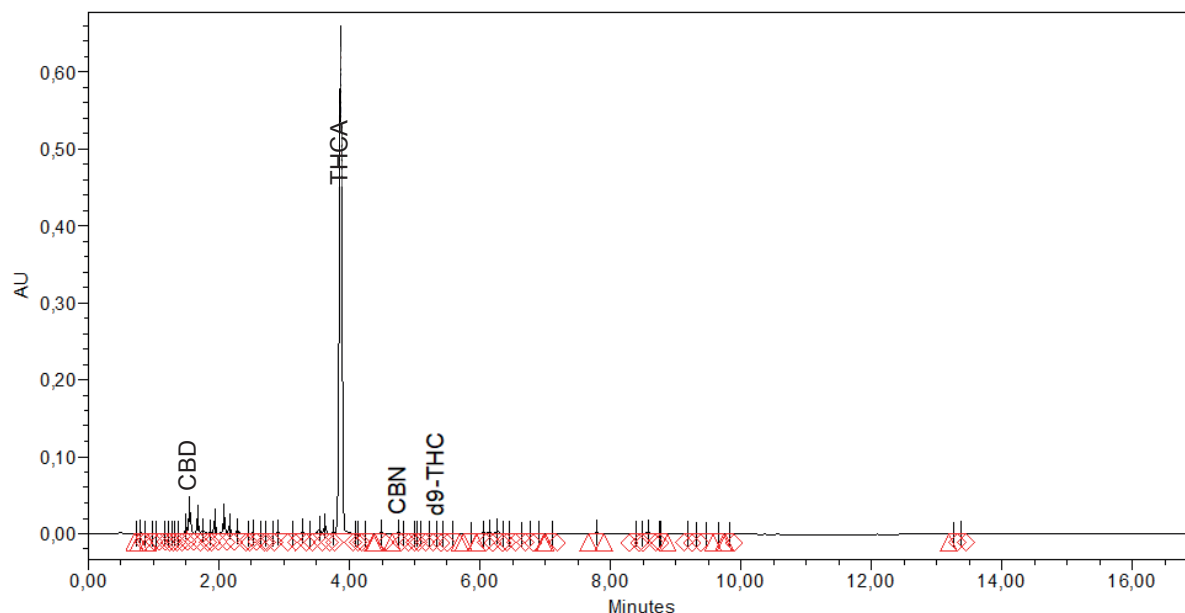
Component	Assay	Unit
CBDVA	< LOQ	% as is
CBDV	< LOQ	% as is
CBDB	< LOQ	% as is
THCV	< LOQ	% as is
CBD	< LOQ	% as is
CBDA	< LOQ	% as is
CBG	< LOQ	% as is
CBGA	< LOQ	% as is
CBN	0.12	% as is
d9-THC	0.07	% as is
d8-THC	< LOQ	% as is
Sum THC	0.07	% as is
CBC	< LOQ	% as is
CBCA	< LOQ	% as is
CBL	< LOQ	% as is
CBT	< LOQ	% as is
THCA	28.77	% as is
HHC	< LOQ	% as is
10-OH-HHC	< LOQ	% as is

Limit of quantitation, LOQ = 0.05 w / w %.

	Name	Signature
<b>Author:</b>	Žiga Ogrin, B.Sc., Chemist	
<b>Approved by:</b>	Davor Štirn, Senior Analyst	

**Client name:** E&S Organic Products s.r.o.  
**Batch number:** E&S 2\_121654  
**Date of manufacture:**

**Date of Analysis:** 04.12.2024  
**Raw data:** RsID: 148423  
**Analytical technique:** UPLC – PDA (UV)



## Heavy Metals by ICP-MS

Analyte	LOD (ppm)	LOQ (pp)	Result (ppm)
Arcenic	0.002	0.02	ND
Cadmium	0.003	0.03	ND
Lead	0.001	0.01	ND
Mercury	0.10	0.04	ND

ND = Not Detected; NT = Not Tested; LOD = Limit of Detection; LOQ = Limit of Quantitation; P = Pass; F = Fail; RL = Reporting Limit; Values over action limits may be estimates